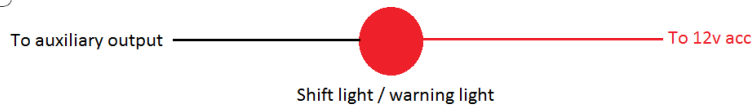
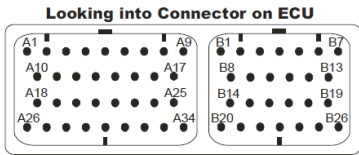
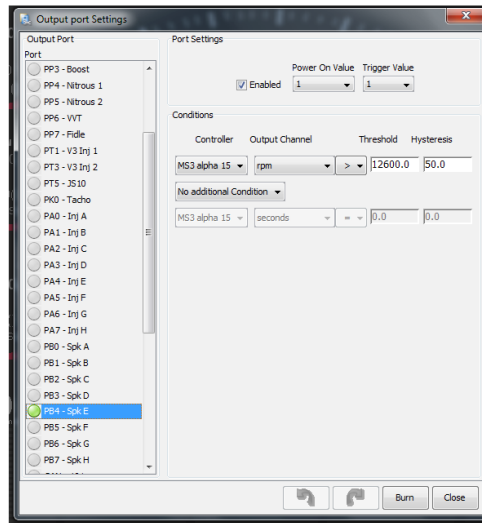


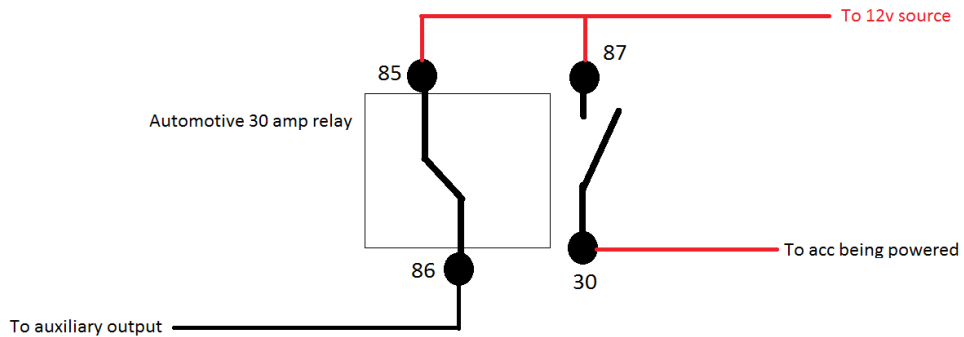
IMPORTANT !!!!!!! Must remove A28 from connector before plugging ECU into harness
Discard wire and this is not needed the MS3 ULTRA

- A14 = Warm Led 5 amp max
- A15 = Accel Led 5 amp max
- A25 = D14/inj led (Datalog indicator led) 1/2 amp max
- A28 = Nitrous2 out 5 amp max
- A29 = Boost output 5 amp max (Air shifter sol)
- A30 = VVT output 5 amp max
- A31 = Nitrous1 out 5 amp max

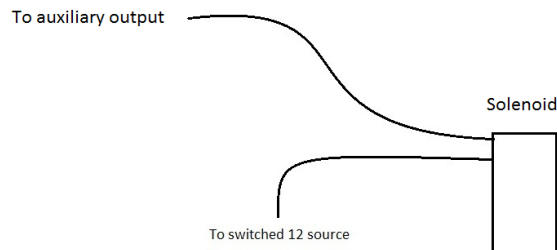
- B4 = Spark E 10 amp max
- B5 = Spark G 10 amp max
- B6 = Spark H 10 amp max
- B7 = Spark F 10 amp max
- B25 = IAC1 1/2 amp max (power on/ trigger value = 0)
- B26 = IAC2 1/2 amp max



OR



OR



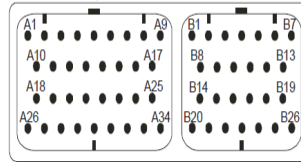
A1 Coil1
 A2 COIL 2
 A3 COIL 3
 A4 INJ. 1
 A5 INJ.2
 A6 INJ.3
 A7 INJ.4
 A8 V3 INJ 1
 A9 FUEL PUMP
 A10 COIL 4
 A11 EGO_2 = AMS 1000
 A12 EX_MAP = Oil press
 A13 SPARE ADC = Fuel press
 A14 WARM LED / D15
 A15 ACCEL LED /D16
 A16 V3 INJ 2
 A17 12 SWITCHED

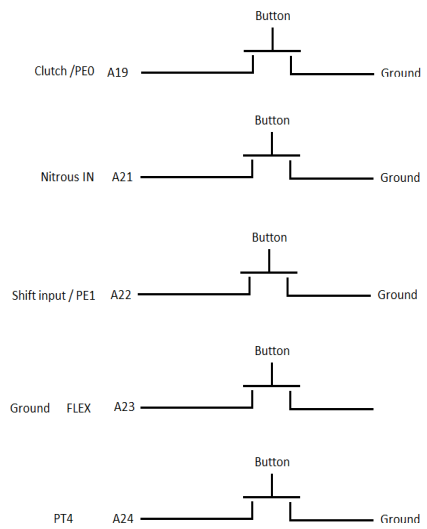
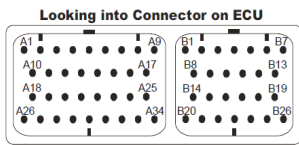
A18 GROUND
 A19 CLUTCH/PEO
 A20 PT2/CAM INPUT = speedo sensor
 A21 N20 INPUT
 A22 SHIFT INPUT
 A23 FLEX INPUT
 A24 PT4 INPUT
 A25 INJ LED / D14 = Sd Logging LED
 A26 GROUND
 A27 GORUND
 A28 NITROUS2 OUTPUT
 A29 BOOST/SHIFT OUTPUT
 A30 VVT OUT
 A31 NITROUS1 OUT
 A32 PP2/IDLE
 A33 DATA TO DASH
 A34 TACHO/PK0

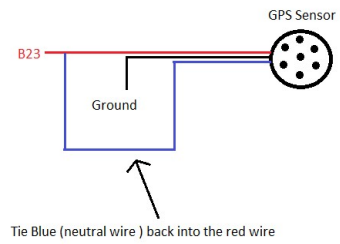
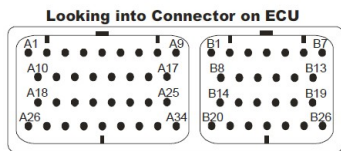
B1 GROUND
 B2 CRK +
 B3 CAM +
 B4 SPARK E = Shift light output
 B5 SPARK G
 B6 SPARK H
 B7 SPARK F
 B8 N/C
 B9 CRK -
 B10 CAM -
 B11 PA5/INJF
 B12 PA6/INJG
 B13 PA7/INJH

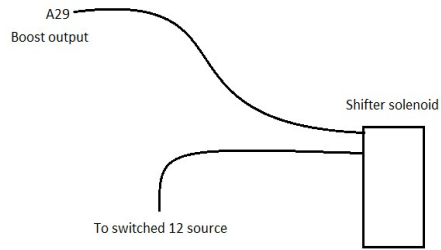
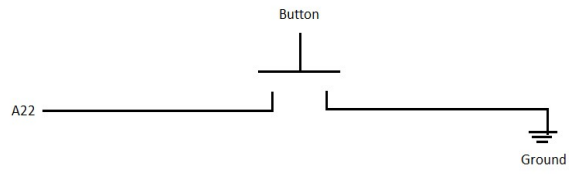
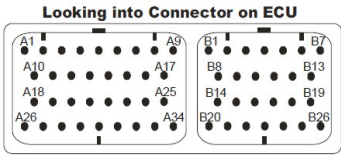
B14 5VOLT TO SENSORS
 B15 TPS
 B16 MAT
 B17 CLT
 B18 PA4/INJE
 B19 ADC6
 B20 GROUND
 B21 FIDLE/ DASH TACH
 B22 DATA TO DASH
 B23 GPS/ADC7
 B24 MAP
 B25 STEPPER 1
 B26 STEPPER 2

Looking into Connector on ECU





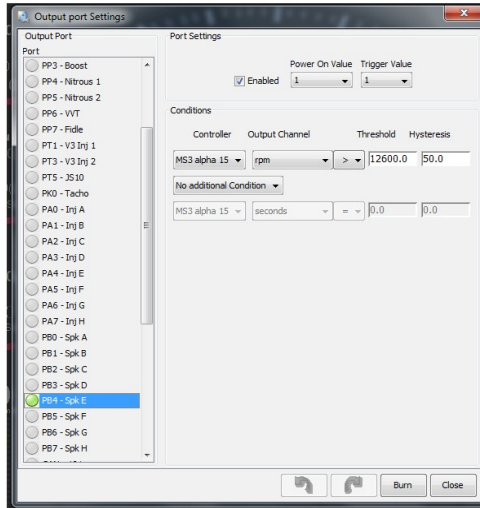
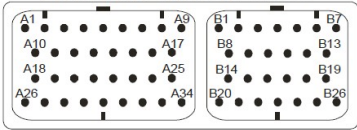




- A14 = Warm Led 5 amp max
- A15 = Accel Led 5 amp max
- A25 = D14/inj led (Datalog indicator led) 1/2 amp max
- A28 = Nitrous2 out 5 amp max
- A29 = Boost output 5 amp max (Air shifter sol)
- A30 = VVT output 5 amp max
- A31 = Nitrous1 out 5 amp max

- B4 = Spark E 10 amp max
- B5 = Spark G 10 amp max Logger output
- B6 = Spark H 10 amp max
- B7 = Spark F 10 amp max
- B25 = IAC1 1/2 amp max (power on/ trigger value = 0)
- B26 = IAC2 1/2 amp max

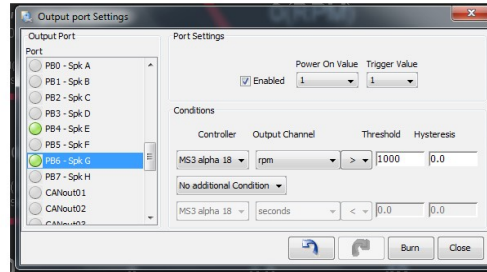
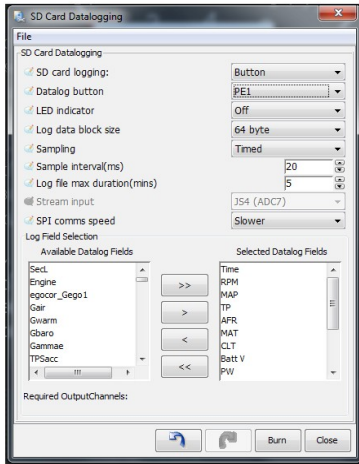
Looking into Connector on ECU

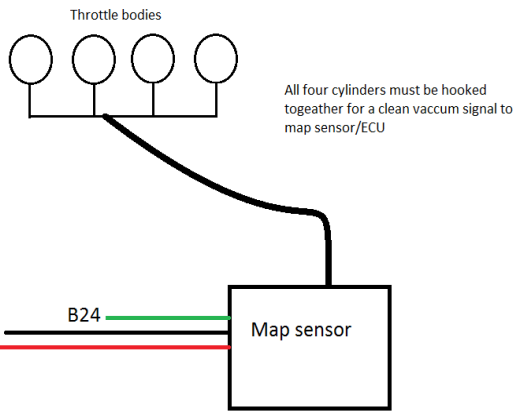


Jumper wire from A connector to B connector



Settings for logger input/output





Looking into Connector on ECU

